

Tudor Close | Brixton, SW2



£245,000

Leasehold - Share of Freehold

- Council Tax Band A
- Share of Freehold
- Safe Gated Development with Porter and access code
- Close to magnificent Brockwell Park

Tudor Close | Brixton, SW2

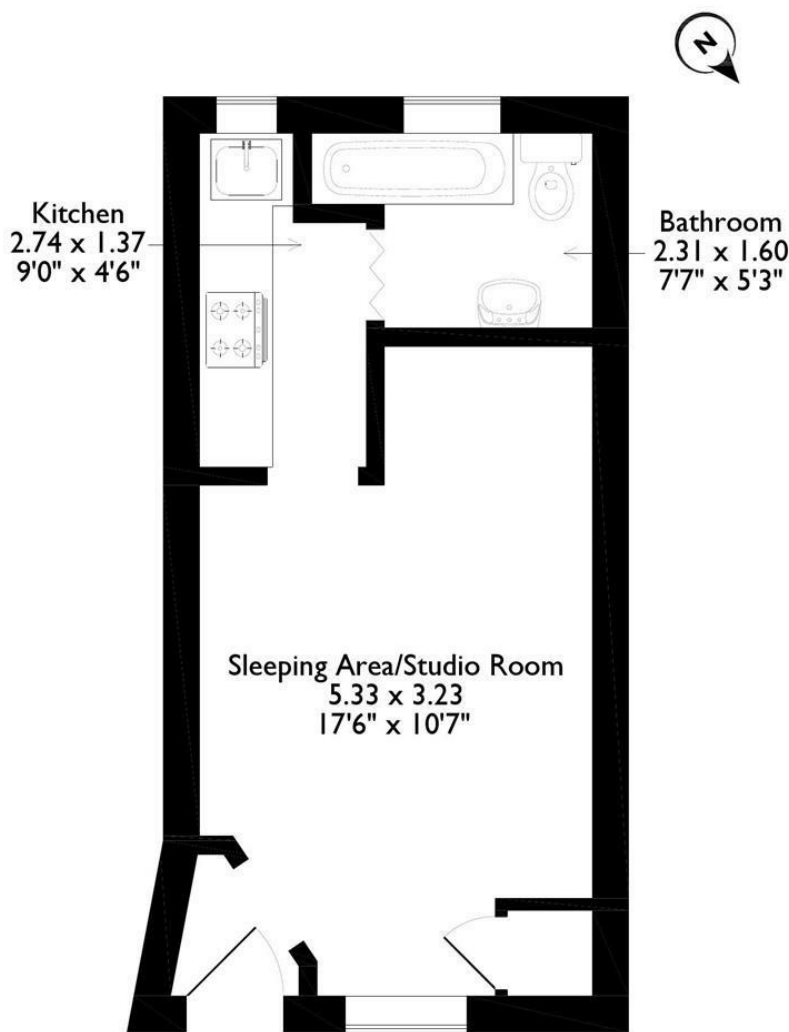


Eden Harper are delighted to present this smart and stylish studio apartment in this sought after development on Brixton Hill.

The apartment features a good size modern reception room with wood flooring, and a double bed with ample storage built in. There is a modern, fitted separate galley style kitchen with modern hob and oven. It also has a lovely modern bathroom.

This gated development has a great community and features a communal swimming pool, beautifully kept communal gardens and is perfect for short and easy access to Brixton rail and tube stations, the eateries of Brixton Village, Ritzy Cinema, Brixton (O2) Academy and the beautiful Brockwell Park. Early viewings are essential.

Tudor Close, Brixton Hill, London



Please note that the location of doors, windows and other items are approximate and this floorplan is to be used for illustrative purposes only. Unauthorized reproduction is prohibited.

Energy Efficiency Rating		
	Current	Potential
Very energy efficient - lower running costs		
(92 plus) A		
(81-91) B		
(69-80) C		
(55-68) D		
(39-54) E		
(21-38) F		
(1-20) G		
Not energy efficient - higher running costs		
	60	63
England & Wales <small>EU Directive 2002/91/EC</small>		
Environmental Impact (CO ₂) Rating		
	Current	Potential
Very environmentally friendly - lower CO ₂ emissions		
(92 plus) A		
(81-91) B		
(69-80) C		
(55-68) D		
(39-54) E		
(21-38) F		
(1-20) G		
Not environmentally friendly - higher CO ₂ emissions		
England & Wales <small>EU Directive 2002/91/EC</small>		

These particulars are designed to provide a guideline only and cannot be relied upon as a statement of fact. The description represents the opinion of the author and is not intended to provide false or misleading information. Any prospective purchaser should make further checks on its accuracy. All measurements are approximate and floorplans are for representation only.



Eden Harper
3 Arlington Parade, Brixton Hill, Brixton, SW2 1RH
0207 274 3111
brixsales@edenharper.com
www.edenharper.com